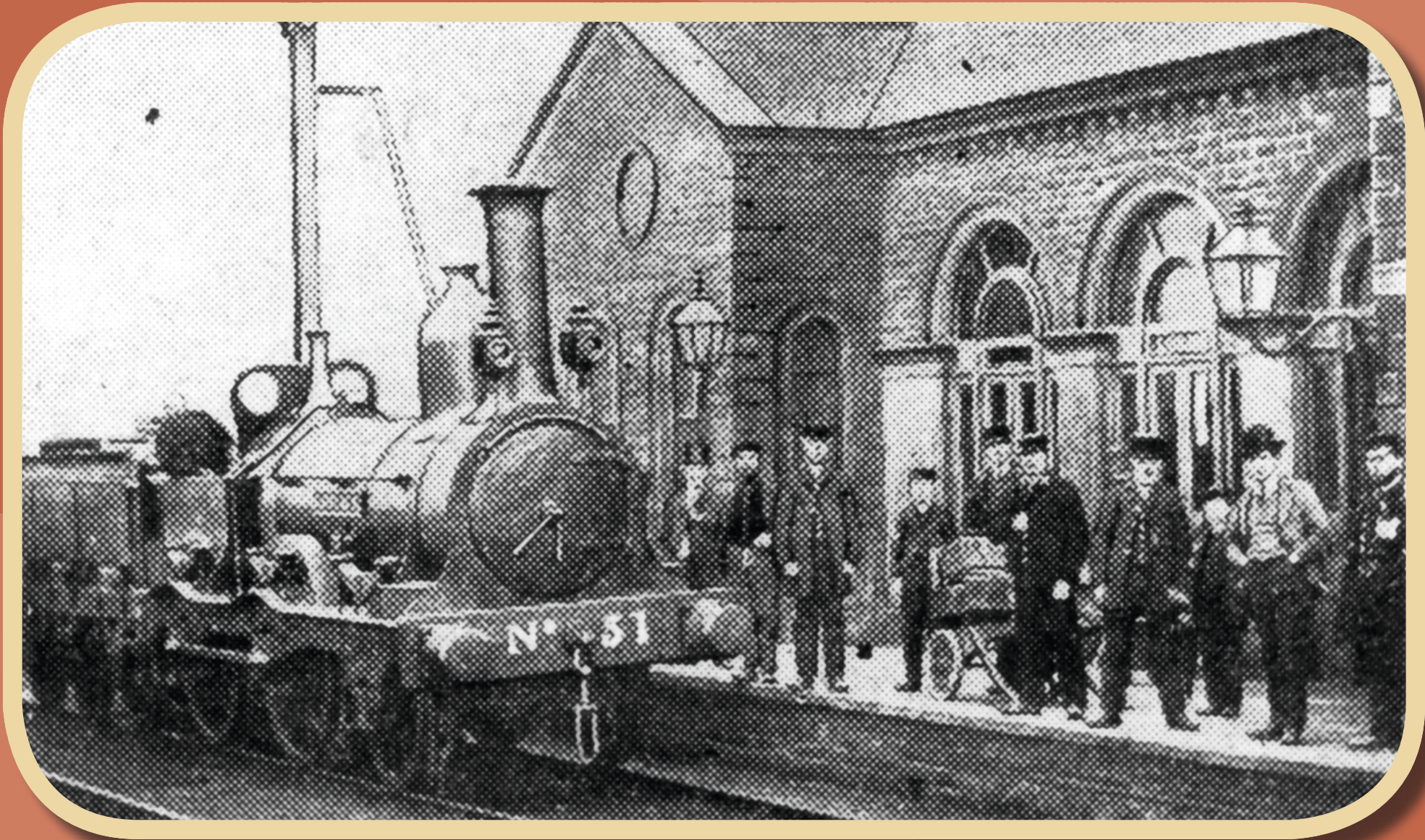


EAST LANCASHIRE'S HISTORICAL COMMUNITY STATIONS

COLNE



Colne station late 1800s – photo courtesy Lancs & Yorks Railway Society



Colne station 1970s – photo courtesy Brian Haworth



Colne station entrance 2009 – photo courtesy Simon Clarke

COLNE STATION

The East Lancashire Railway Company applied for parliamentary powers to construct a line from Stubbins Junction to Accrington then splitting to run west to Blackburn and east to Burnley and Colne which was authorised in 1845.

The contract to build the section of line between Hapton and Colne was awarded to William and Richard Hattersley at a price of £128,000.

The Midland Railway reached Colne first in October 1848 the East Lancashire Company arriving in February 1849. The Lancashire and Yorkshire Railway Company absorbed the East Lancashire Railway Company in 1859 and Colne became a “Joint Station” shared by the Midland and “the Lanky.”

The Midland built the first station buildings, goods shed and a small two road engine shed. In 1891 a 50 foot turntable was installed at the North end of the station. Both the Midland and LYR goods yards had ten ton cranes for dealing with the busy and varied freight traffic.

By the turn of the century a large six road carriage shed was constructed by the Lancashire and Yorkshire Railway with a four road engine shed close by. A 55 foot turntable was also provided adjacent to the depot.

The engine shed closed in 1936. The Midlands Colne to Skipton line closed on 1st February 1970 and shortly after the East Lancs Line between Nelson and Colne was singled.

Colne station was downgraded to an unstaffed halt on 3rd May 1971 and the remaining buildings soon fell into disrepair and were sadly demolished in the late 1970s. Colne station is now a pale shadow of its former self, a single platform and a single track served by an hourly service from and to Blackpool South.

