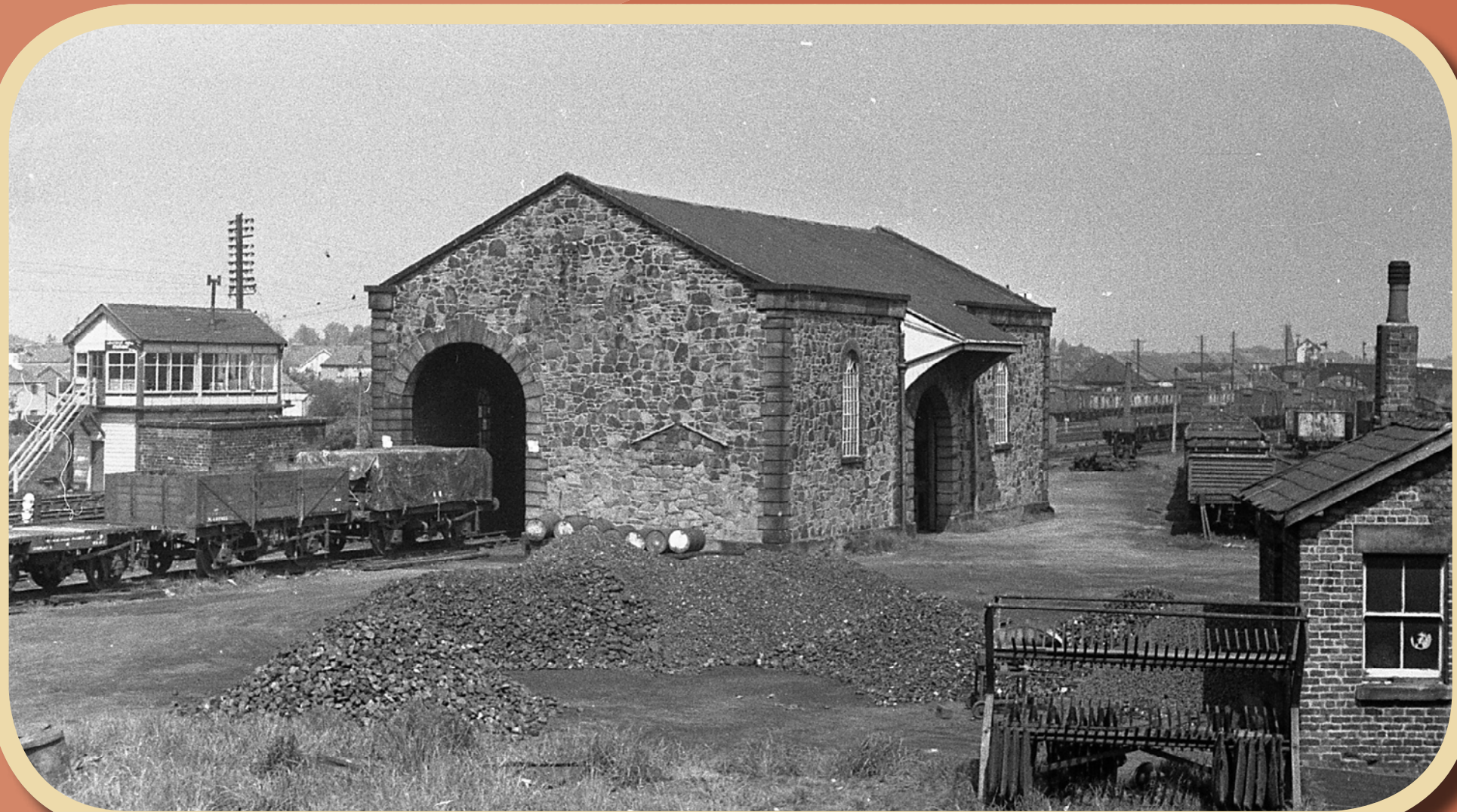


EAST LANCASHIRE'S HISTORICAL COMMUNITY STATIONS

LOSTOCK HALL STATION



Lostock Hall Station – looking west in 1963. Photograph courtesy of LYRS



Lostock Hall goods shed 1965. Photograph courtesy of LYRS



An early picture of Lostock Hall showing staff compliment. Photograph courtesy of LYRS



Photograph courtesy of Brian Haworth

A BRIEF HISTORY OF LOSTOCK HALL STATION

The first station to be built at Lostock Hall was situated on the west side of Watkin Lane Bridge and was opened by the East Lancashire Railway Company in 1846 adjacent to a site they had earmarked for the construction of a locomotive engine shed.

The East Lancashire Railway Company was absorbed into the Lancashire and Yorkshire Railway Company in May 1859. By 1877 the traffic demands made the building of a larger locomotive depot a priority. A new depot was constructed on the same site and opened in 1881.

Goods traffic continued to grow and the goods facilities expanded to satisfy demand. By 1904 the station was equipped to deal with passengers, goods traffic, horse boxes and cattle wagons and was also equipped with a five ton crane. The stone built goods shed was situated behind the current Preston bound platform.

Public goods facilities were withdrawn on the 25th January 1965 and the 1846 station was closed to passenger traffic on the 6th October 1969. The station buildings were demolished in the early 1970s. The adjacent locomotive depot survived until the end of steam on British Railways and was then used for a short period as a wagon repair depot finally closing and being demolished in 1990.

On the 14th May 1984 a new station was opened by British Rail at Lostock Hall which was financed by Lancashire County Council. The new station was built on the east side of Watkin Lane Bridge and two stone waiting shelters were provided. Two recycled waiting shelters from Accrington were installed as part of a European project SUSstations in 2011 and in 2018 a ticket vending machine was provided.

The station sits on the East Lancashire Community Rail Partnership line and has a very active station friends group who maintain the many planters and gardens at the station.

CRL
Community Rail Lancashire

n northern
by arriva



East Lancashire
Community Rail Partnership