

Pleasington All Together Now

Why Pleasington station?

Pleasington is on the Blackpool South to Colne line, served by an hourly diesel service.

The station is a request-only stop. It was in need of some revitalisation to help restore local pride and create a more suitable gateway to the area. It had a rather underwhelming station environment with old and dirty barrel roofed shelters on each platform, overgrown vegetation, broken fencing and limited seating.

Our inspiration; station wildlife.

The link was made to illustrate links to nature at the stop and to enable work with diverse groups.

Inspired by the rural setting of the station and the potential to encourage more local wildlife habitats, the project developed a 'promoting nature' artistic theme, going forward in partnership with local artist Alastair Nicholson. It was also intended to become a gateway to Blackburn's impressive Witton Country Park and within close proximity to the planned Weavers Wheel cycle and walking network which links to the Leeds & Liverpool Canal towpath.



A new station sign

What were the outcomes?

The project involved multiple community groups who all had their own involvement in this creative, nature-inspired project.

A wide variety of outcomes were achieved, including;

- Colourful station signs
- Wildlife recognition posters
- Bright artwork
- Branded information boards
- Vegetation clearance
- Extensive landscaping
- Bird feeders, bug hotels and nest boxes
- A pirate themed cycle and walking path
- Recycled planters with flowers
- Deep cleaning
- Repair of fencing
- Repainting
- Production of a story book titled 'The Pirates of Pleasington'
- Production of a cycle and walk path 'z-card'

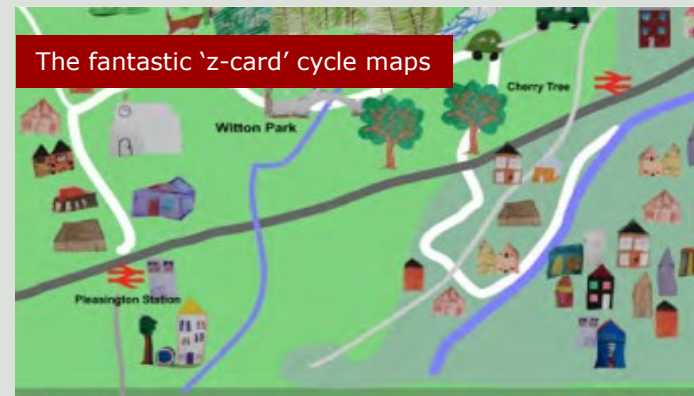


Nature-inspired children's artwork

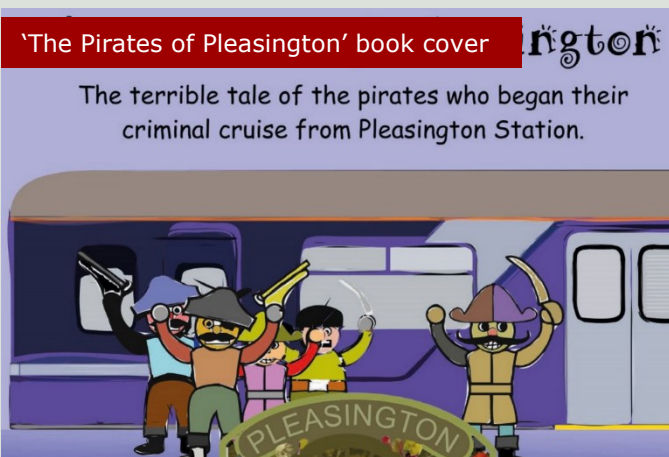
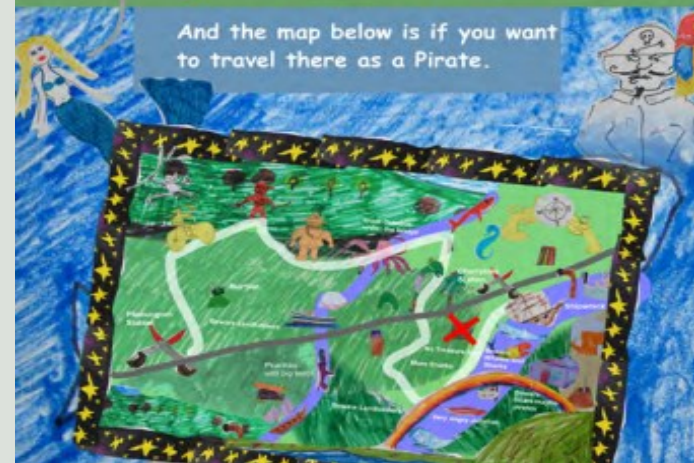
The benefits to our partners

The project had positive outcomes for every group involved, including;

- Facilitating local pride and a feeling of ownership in the station
- Work with adults who have learning disabilities from 'Stanley Grange' to enable project pride
- Local schools, colleges and group art projects, developing associated art skills
- Links to onward active travel (walking and cycling) to Witton Country Park and Canal



The fantastic 'z-card' cycle maps



'The Pirates of Pleasington' book cover

ngton

The terrible tale of the pirates who began their criminal cruise from Pleasington Station.



Creative new posters

Legacy

The project's value to CRL and to the railway cannot be overstated.

The project resulted in;

- Collaboration between a wide range of local groups, as well as primary and higher education facilities
- A continuation of work with these groups beyond the project, including links established with the Canal and Rivers Trust
- Reduced vandalism
- Reduced anti-social behaviour
- A pleasant, safer station environment
- Increased ridership
- Won 3rd place in the 2016 Community Rail Awards, in the category of "Involving Diverse Groups"
- Won the 2015 Abellio Diversity Challenge

How to get in touch with us:

Community Rail Lancashire Ltd:

Accrington Railway Station, Eagle Street, Accrington, BB5 1LJ

Telephone: 01254 386579

Email: info@communityrail Lancashire.co.uk

Key Contacts

Richard Watts, Director, Community Rail Lancashire

- 07887 831126

Brian Haworth, Community Rail Education Development Officer

- 07887 831129

Daisy Chapman-Chamberlain, Community Rail Education Development Officer

Emily Elliott, Community Rail Education Development Officer

Marjorie Birch, Vice Chair East Lancashire & Clitheroe Line CRPs

James Syson, Chair of East Lancashire & Clitheroe Line CRPs

Web Master:

Simon Clarke, Community Rail Development Officer

Want to know more?

Go to: www.communityrail Lancashire.co.uk/all-together-now



Pleasington

All Together Now



Our 'Summer' running-in board!

With special thanks to;

- Alastair Nicholson
- Blackburn with Darwen BC
- Abellio
- Connecting East Lancashire
- Feniscowles Primary School
- Young Weavers
- Canal and Rivers Trust
- Stanley Grange
- Myerscough Agricultural College
- Stansfield Centre
- Night Safe's Witton Project
- THOMAS
- Network Rail



The revitalised shelter



Network Rail volunteers hard at work!



Our wonderful Stanley Grange volunteers

